

! Follow the steps in this guide before you install the tracker !

1 LOCATE THE IMEI NUMBER



The IMEI number will be printed on the box.

If you are an existing user, log in to your GPSLive account and continue to step number 5.

If you purchased the device with a subscription, please go to the next page. Your account is already created.

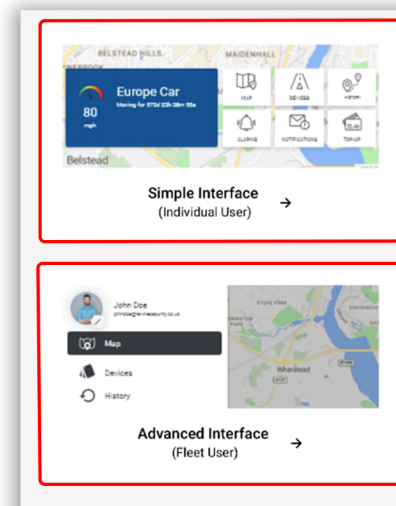
2 REGISTER YOUR ACCOUNT

Download the GPSLIVE app from the Apple App Store or Google Play store. Open the app and tap on "Create New Account". Enter your email address and tap on "Register".

3 ACCESS YOUR ACCOUNT

Check your email inbox/spam for an email from GPSLIVE which will contain your username and password. Open the GPSLIVE app and log in using the username and password provided in the email.

4 SELECT YOUR INTERFACE



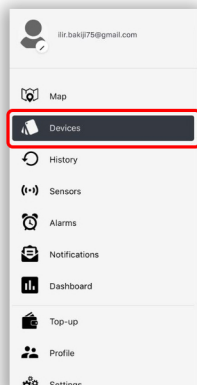
This can be changed in settings at any time.

5 ADD YOUR DEVICE

Advanced Interface

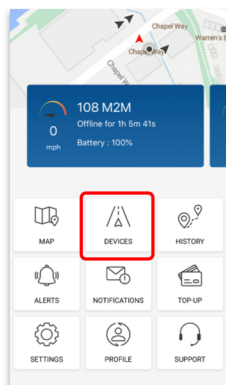


Tap on menu button in the top left corner



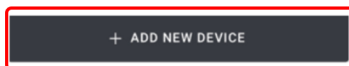
Tap on Devices

Simple Interface



Tap on Devices

Tap on ADD NEW DEVICE



6 FILL THE FORM PROVIDED

Fill the form provided and tap on Save

7 SAVE YOUR DEVICE

Your Device has been added and activated

Installation Guide

WARNING

YOUR DEVICE MUST BE ADDED TO YOUR ACCOUNT BEFORE THE INSTALLATION TAKES PLACE. PLEASE FOLLOW THE INSTRUCTIONS ON THE REVERSE OF THIS USER GUIDE AND THEN INSTALL THE DEVICE.

Wiring diagram and LED lights

- 1 - BLACK (GND):**
GROUND/EARTH/CHASSIS
- 2 - RED (POWER):**
PERMANENT LIVE POWER.
SUPPORTS 10V DC - 30V DC



GPS LED
Once the GPS signal has been established, the LED light will start flashing.

Status LED
Flashing status LED light indicates your tracker is operational.

If you just installed the tracker, it may take up to 10 minutes to establish an initial GPS fix.
If you take your vehicle for a drive, it will allow it to establish a GPS satellite fix faster.

Installation

We have prepared a series of installation videos for different vehicles to make your installation easier. Scan one of the QR codes below depending on what vehicle you are installing the tracker to.

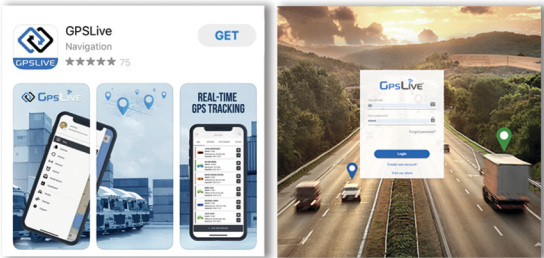
SCAN ME

SCAN ME

SCAN ME

Accessing your account

To access your account please visit:
WWW.GPSLIVE.CO.UK or get our free to download app on Google Play or Apple App Store

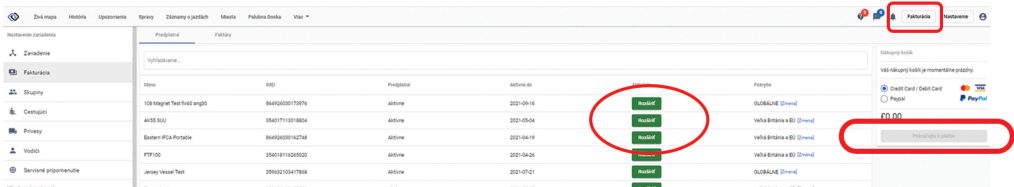


Please use the details below to log in to your account. You can change your password once you have logged in to your account.

Your login details are going to be displayed here if you have purchased your tracker with service top-up.

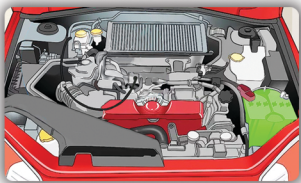
How do I extend my subscription?

Visit WWW.GPSLIVE.CO.UK and follow the instructions below:

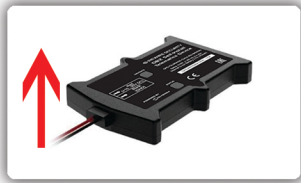


- Clik on **"Billing"** in the top right corner.
- Clik on **"Activate" / "Extend"** on the device you wish to activate or extend.
- Proceed to the payment screen.

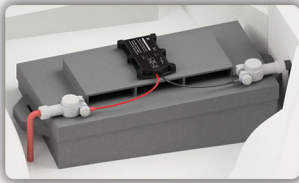
Alternatively, follow the steps below:



Locate the battery and wipe it using the wipe provided with the unit.



Install the tracker with the logo facing up and in a horizontal position.



Install the tracker, peel the sticker and push onto the battery firmly.